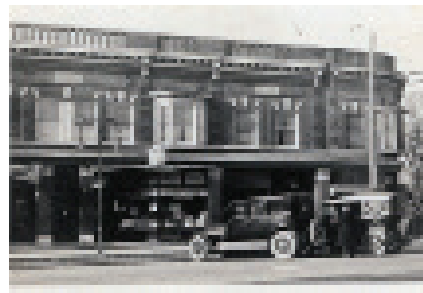


A Letter from Pastor Randy

In 1924, on the second floor of a small building in downtown Birmingham, 17 people comprising the original Redeemer congregation met for the first time for worship and fellowship. Within six months the church moved to a small, one room building on Ann Street, and in 1942 Lutheran Church of the Redeemer built its first chapel at our current location. Throughout the years, the church continued to grow its programs and improve its surroundings to better meet the needs of the community.

As we've grown through the years, our colonial steeple has become a recognizable landmark in the community and the importance of the Redeemer sanctuary has become increasingly meaningful. Whether it's worship, mission work, or fellowship, the heart of our activity begins in the sanctuary. Yet it has not been updated since 1956. In its present state, we are unable to meet the needs of today, to say nothing of the future, which is where we have to focus. Currently, the aisles are too narrow for wheelchair access, we don't have capacity for larger services, our organ is failing fast, and we have basic maintenance issues such as a leaking foundation whenever we get a good rain. Given where we are



The First Redeemer service took place in 1924 on the 2nd floor of the Johnston-Shaw building in downtown Birmingham. The first floor of this building is now home to Churchill's Cigar Bar and, coincidentally, one of Pastor Randy's favorite hangouts.



today, 77 years since original build, this beloved room has simply outlived it's useful life. Additionally, the music room and children/youth spaces are not adequate for all the activity we have in those programs.

The good news is that our plans for Sacred Space 2 will completely address all of these shortcomings. Building

continued on page 7



Lutheran Church of the Redeemer-1942



Groundbreaking-1941

REDEEMER THROUGH THE YEARS

1924	17 people meet at downtown Birmingham building
1925	Move to a one-room building on Ann Street
1941	40 families break ground on current 6 acre site
1952	Youth wing added
1956	Sanctuary expanded to current state
1961	New Steeple installed
1971	Addition of Chapel, Library, Gym, Kitchen, Great Room and 4 more classrooms
2010	Sacred Space 1: Town Square, new Nursery, new Westmaple classrooms, enhanced Gym

Our Vision and Objectives

As we approach our 100th anniversary in 2024, it's a perfect time to reflect upon the diligence, hard work and vision of the Redeemer family throughout the years, laying the foundation for where we are today. Almost 100 years later, our core vision remains unchanged: to offer a church – and specifically a worship style – that enables us to reach out to our community in ways that allow Jesus to touch lives and change lives. Sacred Space 2 is a way to fulfill this mission.

Redeemer has kept up the appearance of our property so that it remains attractive, but there is much that needs attention, especially if we want to continue to grow and serve our community. Phase 2 will allow Redeemer to move towards 2024 and celebrate not just for our congregation today, but for the future generations that we can feel confident about attracting to Redeemer, and thus to the Lord's table.

So, although we are talking about bricks and mortar improvements and a goal of raising \$7.1 million, the work is about more than maintenance and money; it is about achieving our mission.

We are facing many deferred maintenance requirements including the replacement of windows, the wooden steeple, an aging fractured organ, the installation of a city-mandated fire suppression system, and an update of our 30+ years old décor. Phase 2 encompasses three main areas of renovation of our church facility – the sanctuary, music, and children/youth.

**One GENERATION
commends your works
to another;
they tell of your
MIGHTY ACTS.
Psalm 145:4**



Almighty God and Father, as we enter Your house of worship we stand upon holy ground. We humbly thank you for the legacy of faith You have nurtured among your people since the very beginnings of The Lutheran Church of the Redeemer at that first worship service on November 25, 1924. We thank you for the rich history shared by this Body of Christ that is Redeemer. We now look forward to all that we can become, and to all the ways in which we may bring You glory as we embark on a new Sacred Space campaign. We ask that you open our hearts and minds to receive your guidance and give us the vision to expand the ministry of this Sacred Space for Your glory, and so that all may find a place at Your table. In Jesus' holy Name we pray. Amen

The Sanctuary - WHERE IT ALL BEGINS

In this newsletter you will find a summary of all proposed improvements with a focus on the Sanctuary. Future newsletters will provide more detail on other upgrades. And, you can always visit the website for more details.

As the center of our congregation's shared worship experience, it's important that it provides an environment that is both aesthetically pleasing and in alignment with today's expectations. It needs to be inviting, accessible, engaging and flexible enough to meet the need of both our members and visitors from the community, now and for coming generations.

There is no doubt that we have urgent maintenance needs that must be addressed. However in the larger picture these upgrades are more about fulfilling our vision, enabling our ability to continue and meet Christ's commands to love one another and share His love with all that seek Him.

As you can see by the images, the new sanctuary will continue to reflect Redeemer's traditional, colonial aesthetic. Yet, it will be updated to meet safety and handicap compliance regulations, while accommodating additional worshippers. The new design will enable us to accommodate 400 people instead of 300, as



well as providing the ability to set up chairs for over 600 worshippers. This means all families can worship in the Sanctuary instead of the gymnasium on our large Sundays.

Some key changes include the following:

- ✦ Longer pews and wider pew spacing,
- ✦ Wider side aisles for walkers and wheelchairs
- ✦ Dedicated sanctuary seating, front and back, for wheelchairs
- ✦ Communion distribution access without having to navigate stairs
- ✦ An inclined floor improving pew sight lines
- ✦ More balcony seating with two open stairways
- ✦ Flexible Chancel design
- ✦ New sound system integrated with assistive listening devices
- ✦ ADA compliant bathrooms on lower level (accessible via elevator)
- ✦ Larger Town Square with more seating
- ✦ Better access to/from the nursery and sanctuary
- ✦ Larger narthex with visibility through windows to sanctuary
- ✦ Larger, yet traditional Redeemer, windows for more light
- ✦ ADA compliant ramp access on east side of building
- ✦ Handicap parking by new sanctuary doors
- ✦ Flexible seating configurations



Music - ENHANCE OUR WORSHIP EXPERIENCE

Music is a critical component of our Lutheran worship, and Redeemer is blessed by many music groups. However, our current chancel configuration cannot properly accommodate all that our music programs have to offer, to say nothing of an organ that is badly in need of repair. Additionally, to accomplish our goals during Phase 1, the music program sacrificed its space to accommodate a larger nursery and the town hall. Since then, all activity for our many music programs along with all the music files has been conducted from a single room, which also serves as acolyte and elders robing room.

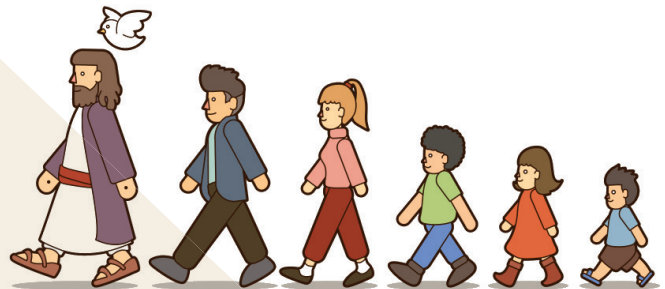
In Phase 2, we plan to restore the music space with dedicated rooms for vocal music, bell music, instrumental music and robing. The enlargement of our sanctuary will better accommodate the many special music programs we host by providing more chancel seating for the choir, bells and instrumentalists and eliminating the need for folding chairs that block communion access. We also plan to replace our organ and relocate our organ pipes, producing enhanced sound throughout the sanctuary.



Children & Youth - SECURE OUR FUTURE



It's easy to see on a Sunday morning during the children's sermon how blessed we are by member families with young children. However, Redeemer provides so much more than Sunday morning programs for children. We run ministry programs six days per week and 12 months per year for ages six months to 18 years. But, a visit to our cinder block classrooms, built in the 1950's, will quickly reveal how we've not kept pace with parent's current expectations. Our Phase 2 plan adds six new classrooms that meet current licensing requirements, a new Christian Education resource center, a new multi-purpose fellowship space and four new bathrooms. These improvements will allow us to reach more young families through the expansion of our weekday children's educational ministry in a safe, licensed facility, and avoid the current waiting lists that exist for some programs.



Interested In Helping With Sacred Space?

There are many ways to get involved in our faith-centered capital stewardship project. It could be as simple as just taking a fresh look at the ministries of our church and how our resources are used to support God's work or it could be by praying, seeking God as we look to the future of our church.

But, if you're looking for more hands-on involvement, some of the teams that need assistance are listed below. We have all-sized jobs to fit a variety of talents. If you have a skill to offer that you don't see listed below, just contact Steve Scheidt at sacredspace@redeemberirmingham.org and he'll find a way to use your talents.

- ♦ **Hospitality** - From coffee hour at worship to small event planning; we always need food, setup and cleanup
- ♦ **Prayer Support** - The entire team needs your prayers, as well as help planning prayer support activities
- ♦ **Church-wide Bible study** - participate in the study and/or assist in the roll-out of the study
- ♦ **Finance** - While early project work is underway, we'll have more to do as we move through the project
- ♦ **Church Database** - Our members' digital contacts (text and email) are in constant need of updating
- ♦ **Phone Support** - Yes, we still talk directly with each other for meeting reminders and other events
- ♦ **Mail support** - In addition to digital communication, we have U.S. mailers that require many hands
- ♦ **Administration** - We lean heavily on our front office, but we could use extra help for this big project
- ♦ **Small Group Gatherings** - We have several small group events that require advance planning and support

*There are different kinds of gifts,
but the same Spirit.*

*There are different kinds of
service, but the same Lord.*

*There are different kinds of
working, but the same God
works all of them in all men*

1 Corinthians 12: 4 – 6



Board of Elders serving coffee

VOLUNTEERING



Determining Your Commitment Level

Every one of us has commitments that we make in our lives. To commit means that we are promising to undertake and stick with a particular course of action. We make a commitment when we enter into marriage, have children, form friendships, or embark on a career, to name a few. The ways we commit can take the form of time, energy, or money invested in those items we hold as a priority in our lives.

Joining a congregation is a commitment to not only hold to the beliefs set forth by the church, but also to address the physical obligations of our church home in order to make sure that we can continue to grow in our mission of spreading God's word.

As you reflect upon what kind of commitment you want to make to this capital campaign, consider the following:

1. Pray for guidance in reaching a financial decision that will be right for you and for the church.
2. Allow faith to become part of your decision. Look to God for guidance and He will help you with the decision you need to make.
3. Consider sacrifice as a way to set apart a portion of what you have and to give something you personally value, as a way of expressing your love for God and Lutheran Church of the Redeemer.



A Letter from Pastor Randy

continued from page 1

a new sanctuary is a once in a lifetime opportunity and our chance to make a significant impact for generations to come.

Looking back at Phase 1, we accomplished much and did so during a recession that challenged many of our members. Yet, can any of us imagine this building without the Town Square? It has been transformational as a welcoming entrance, a gathering place for coffee hour, social activities, even funeral visitations and luncheons. I believe that Phase 2 will have that same positive impact.

Looking at our rich history, we are a link on the continuum of Redeemer's chain. How blessed we are that the people who came before us had a vision, and then accepted the challenge to build this church. Their foresight, diligence and hard work laid the foundation for where we are today. And, like those before us, as well as our own work in Sacred Space 1, we need to move forward and trust that God is going to continue to bless our ministry and our work.

Pastor Randy

Lutheran Church of the Redeemer
1800 West Maple Road
Birmingham, MI 48009

Address service requested

Pre-Sorted Standard
US Postage Paid
Birmingham, MI 48012
Permit number 15

Sacred Space Bible Study

As we prepare our hearts for this journey as a congregation, we would like to give you the opportunity to study God's word and hear what scripture has to say about our worship space, our mission, and our legacy. Pastor Randy and Andrea Schlak have written a four week study in coordination with the sacred space celebration for the congregation to use in small group settings, private devotions, and on **Sunday & Tuesday mornings September 15/17 through October 6/8**.

Andrea will be teaching Sunday morning classes at 9am and Pastor Walworth will be teaching Tuesday morning classes at 9:30am in the Great Room. If you would like to use this study in your small groups, please email Andrea at schlakandrea@gmail.com to set up a brief over-view meeting.

Celebrate

September 15 Our Legacy and Our Vision
September 22 Our Worship
September 29 Our Children & Youth
October 6 Our Music
October 13 Our Blessings
October 20 First Commitment Weekend
October 27 Second Commitment Weekend
November 10 Celebration Weekend

For More Information

Throughout the Sacred Space campaign, we will be sharing information with you in numerous ways with all information being stored for availability at any time on our website at www.redeemberbirmingham.org/sacred-space-phase-2/. Or feel free to contact Steve Scheidt at sacredspace@redeemberbirmingham.org.